

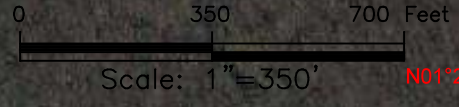
Auditor's Parcel "C"
 85.23 acres
 including 4.41 acres R.O.W.

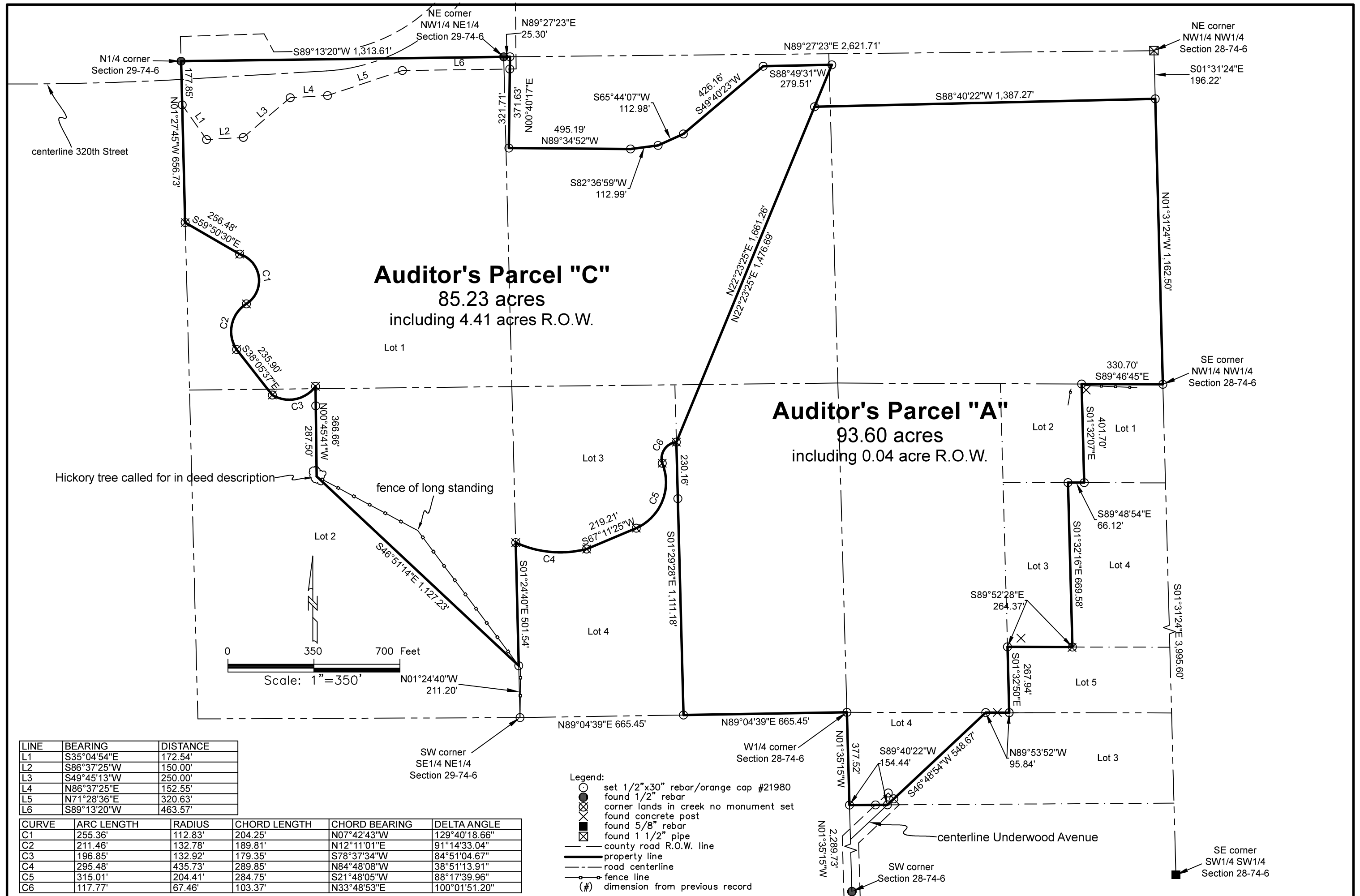
Auditor's Parcel "A"
 93.60 acres
 including 0.04 acre R.O.W.

LINE	BEARING	DISTANCE
L1	S35°04'54"E	172.54'
L2	S86°37'25"W	180.00'
L3	S49°45'13"W	250.00'
L4	N86°37'25"E	152.55'
L5	N71°28'36"E	320.63'
L6	S89°13'20"W	463.67'

CURVE	ARC LENGTH	RADIUS	CHORD LENGTH	CHORD BEARING	DELTA ANGLE
C1	255.36'	112.83'	204.25'	N07°42'43"W	129°40'18.66"
C2	211.46'	132.78'	189.81'	N12°11'01"E	91°14'33.04"
C3	196.85'	132.92'	179.35'	S78°37'34"W	84°51'04.67"
C4	295.48'	135.73'	289.85'	N84°48'08"W	38°51'13.91"
C5	315.01'	204.41'	284.75'	S21°48'05"W	88°17'39.96"
C6	117.77'	67.46'	103.37'	N33°48'53"E	100°01'51.20"

- Legend:
- set 1/2" x 30" rebar/orange cap #21980
 - found 1/2" rebar
 - ⊗ corner lands in creek no monument set
 - ⊠ found concrete post
 - ⊞ found 5/8" rebar
 - ⊟ found 1 1/2" pipe
 - county road R.O.W. line
 - property line
 - - - road centerline
 - - - fence line
 - (#) dimension from previous record



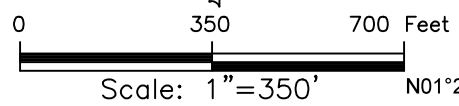


Auditor's Parcel "C"
 85.23 acres
 including 4.41 acres R.O.W.

Auditor's Parcel "A"
 93.60 acres
 including 0.04 acre R.O.W.

Hickory tree called for in deed description

fence of long standing



LINE	BEARING	DISTANCE
L1	S35°04'54"E	172.54'
L2	S86°37'25"W	150.00'
L3	S49°45'13"W	250.00'
L4	N86°37'25"E	152.55'
L5	N71°28'36"E	320.63'
L6	S89°13'20"W	463.57'

CURVE	ARC LENGTH	RADIUS	CHORD LENGTH	CHORD BEARING	DELTA ANGLE
C1	255.36'	112.83'	204.25'	N07°42'43"W	129°40'18.66"
C2	211.46'	132.78'	189.81'	N12°11'01"E	91°14'33.04"
C3	196.85'	132.92'	179.35'	S78°37'34"W	84°51'04.67"
C4	295.48'	435.73'	289.85'	N84°48'08"W	38°51'13.91"
C5	315.01'	204.41'	284.75'	S21°48'05"W	88°17'39.96"
C6	117.77'	67.46'	103.37'	N33°48'53"E	100°01'51.20"

- Legend:
- set 1/2"x30" rebar/orange cap #21980
 - found 1/2" rebar
 - ⊗ corner lands in creek no monument set
 - ⊠ found concrete post
 - found 5/8" rebar
 - ⊞ found 1 1/2" pipe
 - county road R.O.W. line
 - property line
 - - - road centerline
 - - - fence line
 - (#) dimension from previous record